

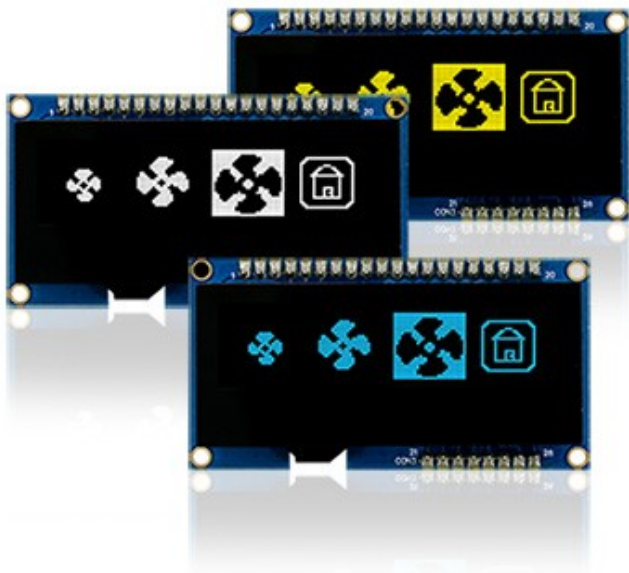


## 1. [REP012832A-CTP] 2.23" 128x32 OLED Display with PCAP Touch Panel

REP012832A-CTP is a graphic OLED display module with PCB & capacitive touch panel. The touch screen has glossy surface and supports 1-point touch detection.

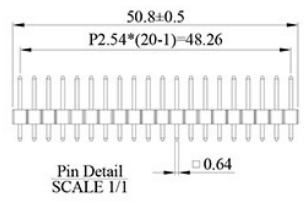
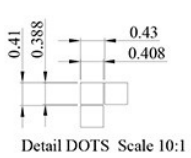
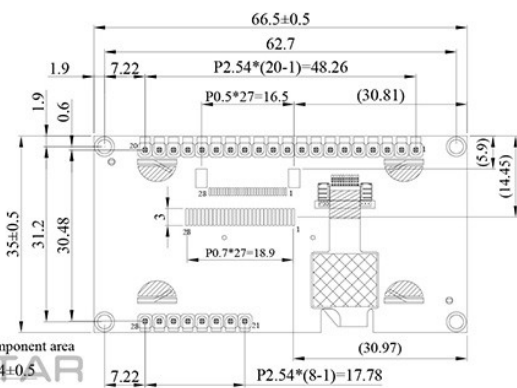
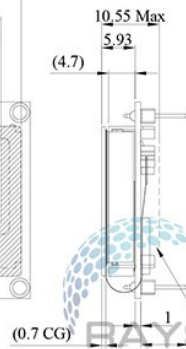
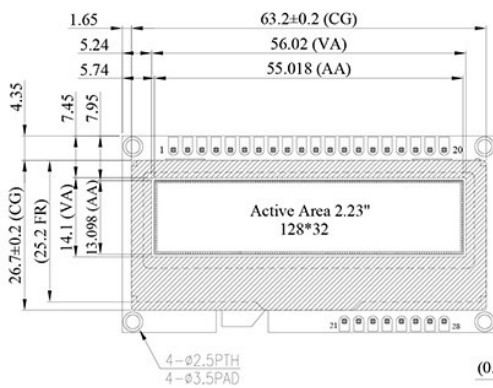
There are two mounting methods of this module, one is using pin header; the other is fixing it with screw holes. Besides, we provide 3 interfaces of connection for customers to choose from: PIN, FPC (need an extra connector), and Hot Bar.

On top of that, we also provide small vibrating motor and buzzer as optional add-on accessories. This 2.23 inches graphic OLED module is a good fit for smart home application, smart control system, medical equipment, etc.



### Specification:

- Module dimension: 66.5 x 35.0 x 10.55(Max)
- Active area: 55.018 x 13.098 mm
- Dot Matrix: 128 x 32
- Pixel size: 0.408 x 0.388 mm
- Pixel pitch: 0.43 x 0.41 mm
- Display Mode : Passive Matrix
- Duty: 1/32 Duty
- Display Color: White
- OLED IC: SSD1305
- OLED Interface: 6800, 8080, 4-Wire SPI, I2C
- SIZE:2.23 inch
- CTP IC: FT6336U
- Detect Point:1
- CTP Interface:I2C
- Surface: Normal Glare



>> [Link to REP012832A-CTP](#)

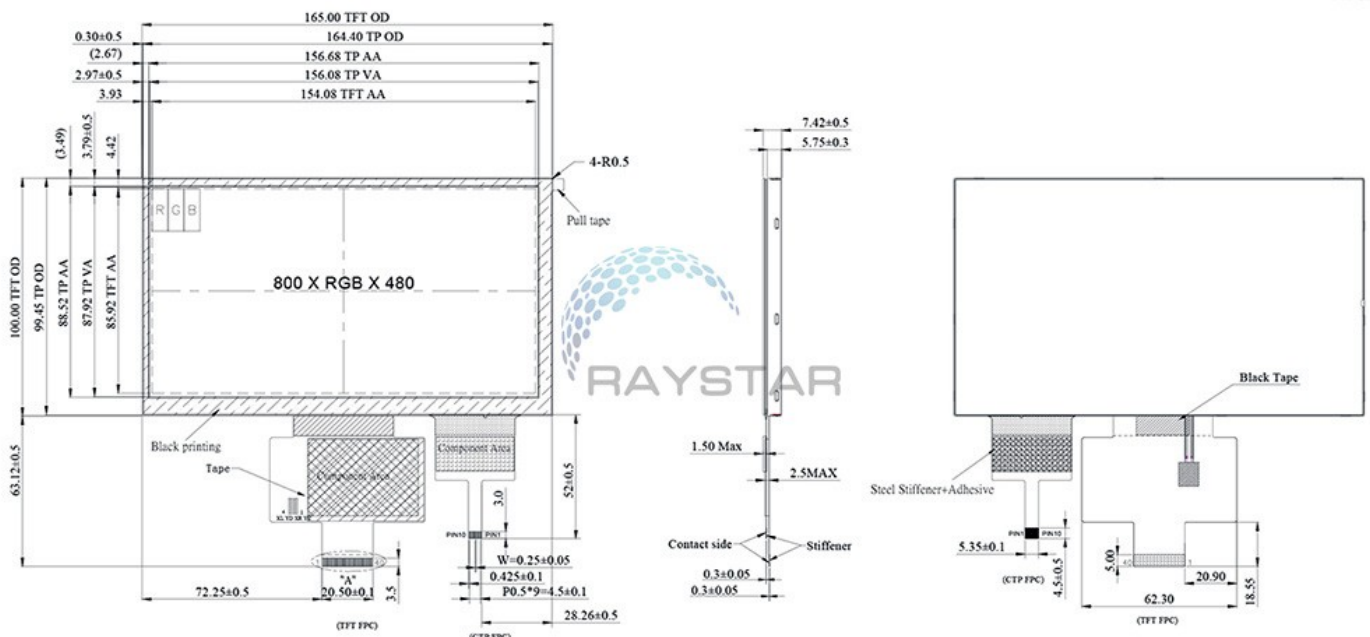
## 2. [RFF700B2-AIH-DNG] 7 inch TFT LCD Display Module with PCAP

RFF700B2-AIH-DNG is a 7-inch TFT LCD module with projected capacitive touch panel. Built-in HX8264-E and HX8664-B driver ICs support 24 bit RGB interface, and also, the module has built-in DC to DC function. The contrast ratio of the module is 800:1 (typical value), the brightness is 700 nits (typical value), and the aspect ratio is 16:9. RFF700B2 series and RFF700Y series are compatible. If you've already used our RFF700Y series, you can give this new RFF700B2 series a try.



### Specification:

- Size: 7.0 inch
- Dot Matrix: 800 x RGB x 480 (TFT) dots
- Module dimension: 165 x 100.0 x 7.42 mm
- Active area: 154.08 x 85.92 mm
- Pixel Pitch: 0.1926 X 0.179 mm
- LCD type: TFT, Normally White, Transmissive
- View Direction: 12 o'clock
- Gray Scale Inversion Direction: 6 o'clock
- Aspect Ratio: 16:9
- Backlight Type: LED ,Normally White
- TFT Interface: 24 bit RGB
- Color arrangement: RGB-STRIPE
- Driver IC: HX8264-E&HX8664-B or Equivalent
- PCAP IC: FT5426 or Equivalent
- PCAP Interface: I2C
- PCAP FW Version: V03
- Touch Panel: PCAP/RTP optional
- Surface: Glare



>> [Link to RFF700B2-AIH-DNG](#)

### 3. [RFH700M-EAW-LRN] 7" 1024x600 STM32 TFT LCD with MCU Control-Board

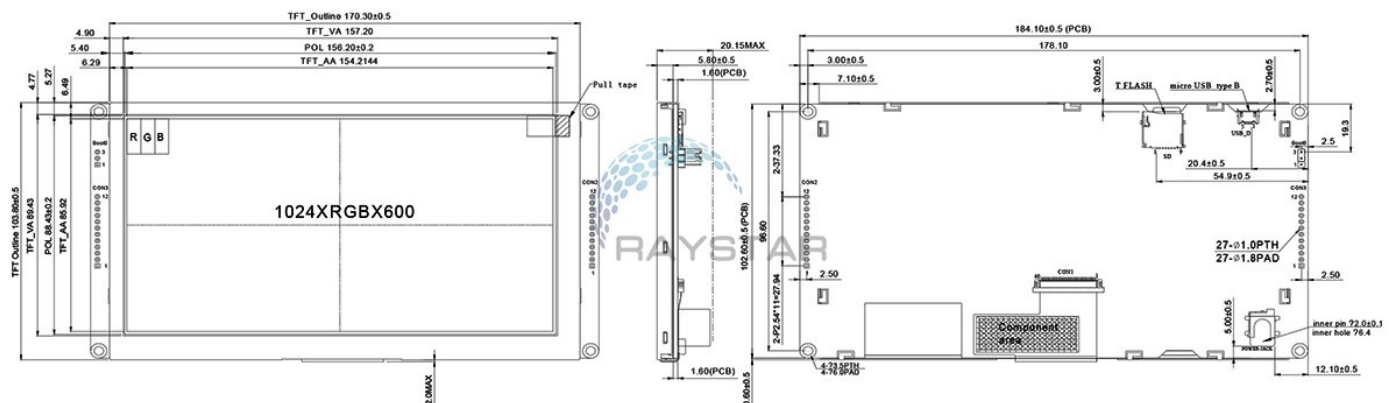
This 7" IPS TFT-LCD display module is a new product of our M-series. Because of IPS panel, it has advantage of wider viewing angle. The module has anti-glare glass surface with aspect ratio 16:9. There are options of resistive touch panel and capacitive touch panel to choose from.

M-series is also named "Clever System", that is, smart TFT display. The module has a built-in micro controller STM32F429 (CPU Frequency 180MHZ) on the control board. R&D of Raystar designed a user's interface (UI) and through this TFT UI editing software and firmware, the users can cut down on development time of their projects. For more info of this M-series IPS TFT, please see the specs below.



#### Specification:

- Size: 7.0 inch
- Dot Matrix: 1024 x RGB x 600 (TFT) dots
- Module dimension: 170.3 x 103.8 x 20.15 mm
- Active area: 154.2144x85.92 mm
- Dot pitch: 0.1506x0.1432 mm
- LCD type: TFT, Normally Black, Transmissive
- Viewing Angle: 85/85/85/85
- Aspect Ratio: 16:9
- Backlight Type: LED, Normally White
- Interface: Uart 19200 Baud rate/SPI
- Touch Panel: PCAP /RTP options
- Surface: Anti-Glare
- Operating mode: Slave mode
- Flash Memory Size: 32M bits
- SD card format: FAT, exFAT



>> [Link to RFH700M-EAW-LRN](http://www.raystar-optronics.com)

#### 4. Comparison: Functions of RFH700M-EAW-LRN

Below are the function comparison of RFF700M-EIW-DRN and RFH700M-EAW-LRN:

Function	RFF700M-EIW-DRN (RFF700G TN panel)	RFH700M-EAW-LRN (RFH700A8 IPS panel)
Text Mode (ASCII)	V	
Unicode Text Mode		V
Flash File System		V
Save Image		V
Save Font	V	V
QR code Generator		V
Clean Block	V	V
Storage Image In Flash		V
Paint SD Card Image	V	V
Paint Geometry	V	V
Sleep Mode	V	V
PWM output	V	V
Setting Backlight	V	V
PTP Calibration	V	V
Erase Flash	V	V

**Please note:**

1. UART commands are incompatible with other M-Series TFT modules.
2. SPI Commands are incompatible with other M-Series TFT modules.

## 5. More Functions of RFH700M-EAW-LRN

### 1. Flash File System:

- 1-1 More convenient to manage flash space.
- 1-2 Delete or add files more easily.
- 1-3 It is available to check flash file list.

### 2. Unicode Text Mode (Multi-Font):

- 2-1 Support Unicode characters.
- 2-2 Download the selectable Unicode font range to Flash.
- 2-3 Font and character size are adjustable
- 2-4 Build-in font (ASCII, 0x20-0x7E).

### 3. Image Storage In Flash:

- 3-1 Protect image data from being modified easily
- 3-2 Support multiple image file formats: BMP, PNG, JPG, GIF, TIFF.

### 4. QR code Generator:

- 4-1 Generate dynamic QR codes.
- 4-2 size and color can be modified.

### 5. Virtual Layer:

- 5-1 One virtual layer can be edited.
- 5-2 Show image by changing the layer.
- 5-3 Elevate visual performance.

### 6. More Geometry function:

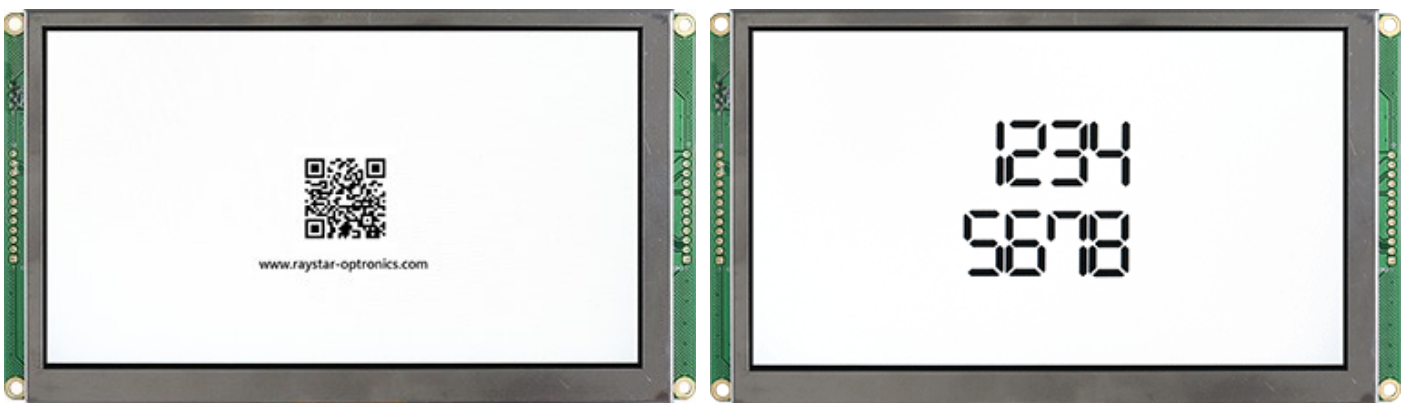
- 6-1 Circle
- 6-2 Ellipse

### 7. How to display Image on SD Card:

- 7-1 The command of displaying images depends on the file name.  
(RFF700M-EIW-DRN version: follow the image order)

### 8. Constant-color Matting:

- 8-1 New command to set a color to be transparent. Not only for images in SD card but also in flash.



QR code Generator

Virtual Layer