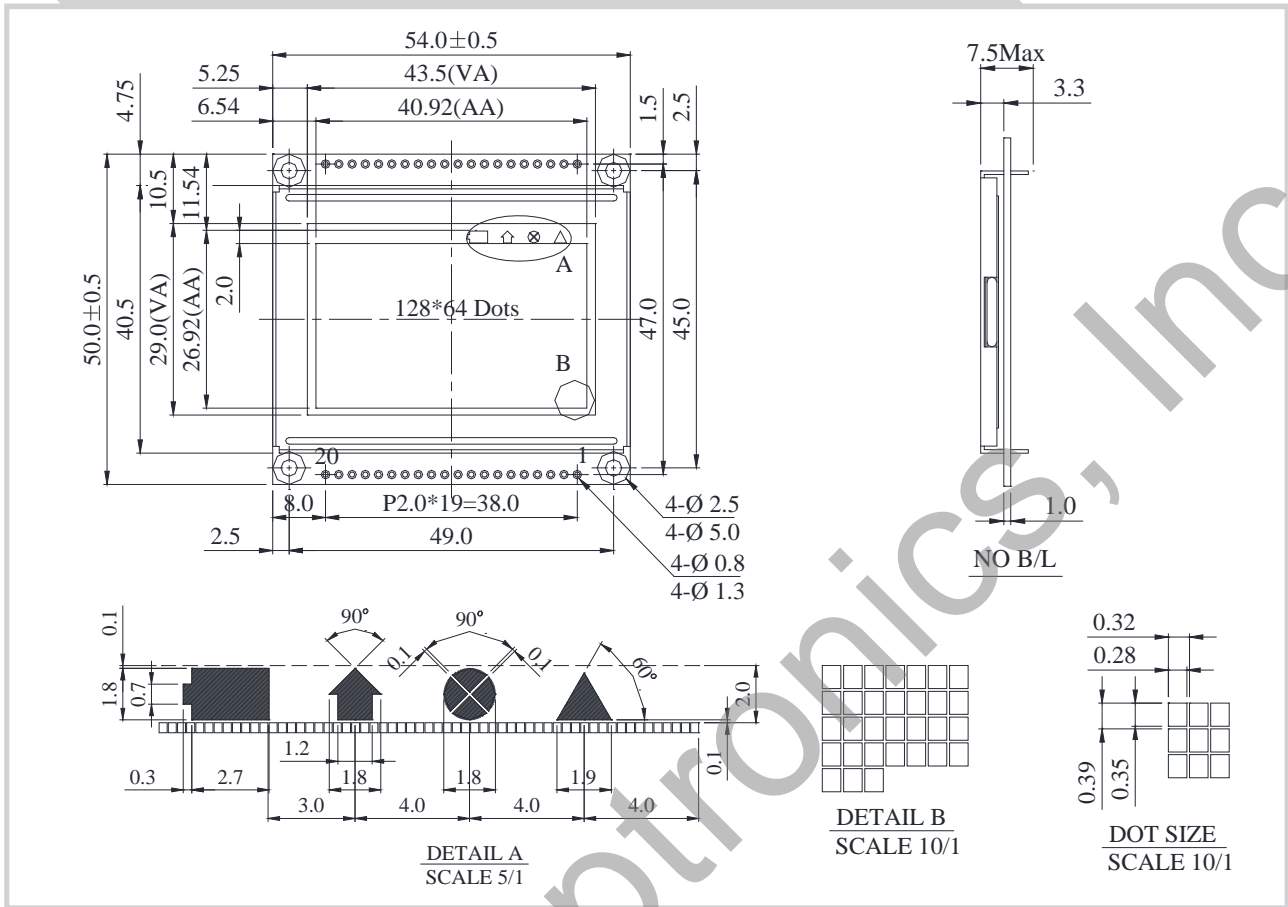


## RG12864H/H1 Graphic 128x64 dots



### Feature

- 128X64 dots + 4 icons
- Built-in controller NT7108, ST7107 or Equivalent
- 5V power supply
- 1/64 duty cycle
- EL backlight (Built-in EL inverter)
- Built-in N.V.
- Interface: 6800
- RG12864H1: LED B/L with 4 ICONs, outline 55.0x50.0mm
- RG12864E2: LED B/L without 4 ICONs, outline 55.0x60.0mm

Pin No.	Symbol	Description
1	V <sub>SS</sub>	Ground
2	V <sub>DD</sub>	Power supply for logic
3	V <sub>O</sub>	Contrast Adjustment
4	D/I	Data/ Instruction select signal
5	R/W	Read/Write select signal
6	E	Enable signal
7	DB0	Data bus line
8	DB1	Data bus line
9	DB2	Data bus line
10	DB3	Data bus line
11	DB4	Data bus line
12	DB5	Data bus line
13	DB6	Data bus line
14	DB7	Data bus line
15	CS1	Chip Enable (Select Column 1 ~ Column 64)
16	CS2	Chip Enable (Select Column 65 ~ Column 128)
17	/RST	Controller reset signal, Active Low
18	V <sub>EE</sub>	Negative Voltage Output
19	A	Power supply for B/L +
20	K	Power supply for B/L -

### Mechanical Data

Item	Standard Value	Unit
Module Dimension	54.0 x 50.0	mm
Viewing Area	43.5 x 29.0	mm
Mounting Hole	45.0 x 49.0	mm
Dot Pitch	0.32 x 0.39	mm
Dot Size	0.28 x 0.35	mm

### Electrical Characteristics

Item	Symbol	Standard Value	Unit
		typ.	
Input Voltage	V <sub>DD</sub>	5.0	V
Recommended LCD Driving Voltage for Normal Temp. Version module @25°C	V <sub>DD-VO</sub>	8.40	V