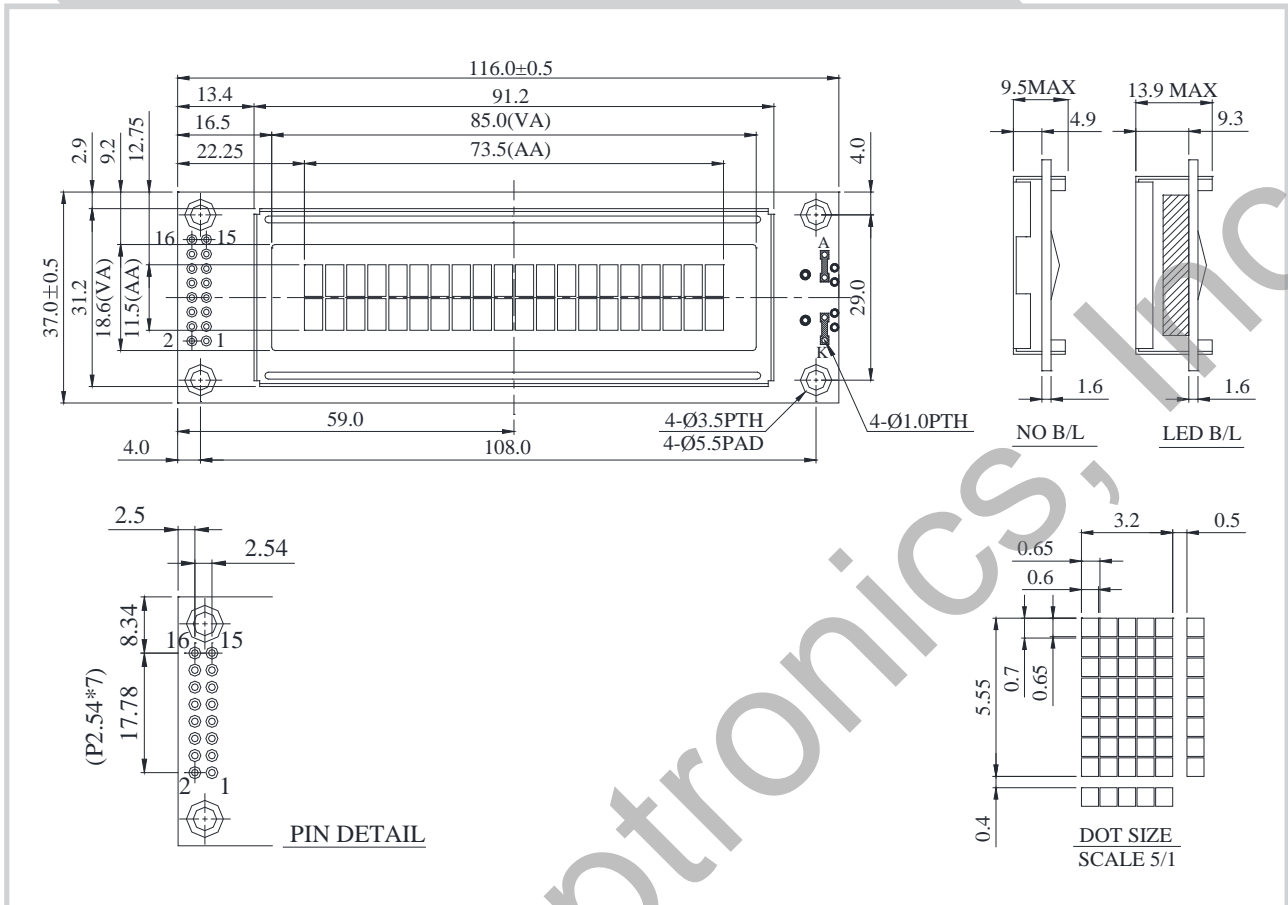


## RC2002A Character 20x2



### Feature

1. 5x8 dots includes cursor
2. Built-in controller ST7066 or Equivalent
3. 5V power supply ( Also available for 3V)
4. N.V, optional for 3V power supply
5. 1/16 duty cycle
6. LED can be driven by PIN1, PIN2, PIN15, PIN16 or A and K
7. Interface : 6800, option SPI/I2C (RW1063 IC)

| Pin No. | Symbol          | Description                     |
|---------|-----------------|---------------------------------|
| 1       | V <sub>SS</sub> | Ground                          |
| 2       | V <sub>DD</sub> | Power supply for logic          |
| 3       | V <sub>O</sub>  | Contrast Adjustment             |
| 4       | RS              | Data/ Instruction select signal |
| 5       | R/W             | Read/Write select signal        |
| 6       | E               | Enable signal                   |
| 7       | DB0             | Data bus line                   |
| 8       | DB1             | Data bus line                   |
| 9       | DB2             | Data bus line                   |
| 10      | DB3             | Data bus line                   |
| 11      | DB4             | Data bus line                   |
| 12      | DB5             | Data bus line                   |
| 13      | DB6             | Data bus line                   |
| 14      | DB7             | Data bus line                   |
| 15      | A               | Power supply for B/L +          |
| 16      | K               | Power supply for B/L -          |

### Mechanical Data

| Item             | Standard Value | Unit |
|------------------|----------------|------|
| Module Dimension | 116.0 x 37.0   | mm   |
| Viewing Area     | 85.0 x 18.6    | mm   |
| Mounting Hole    | 108.0 x 29.0   | mm   |
| Character Size   | 3.25 x 5.55    | mm   |

### Electrical Characteristics

| Item  | Symbol | Standard Value | Unit |
|---|--------|----------------|------|
|   |        | typ.           |      |
| Input Voltage   | VDD    | 3/5            | V    |
| Recommended LCD Driving Voltage for Normal Temp. Version module @25°C | VDD-VO | ---            | V    |

### Display Character Address Code

Display position

|                |    |    |   |   |   |   |   |   |   |    |    |    |    |     |    |
|----------------|----|----|---|---|---|---|---|---|---|----|----|----|----|-----|----|
| DD RAM Address | 1  | 2  | 3 | 4 | 5 | 6 | 7 | 8 | 9 | 10 | 11 | 12 | 13 | --- | 20 |
| DD RAM Address | 00 | 01 |   |   |   |   |   |   |   |    |    |    |    |     | 13 |
| DD RAM Address | 40 | 41 |   |   |   |   |   |   |   |    |    |    |    |     | 53 |